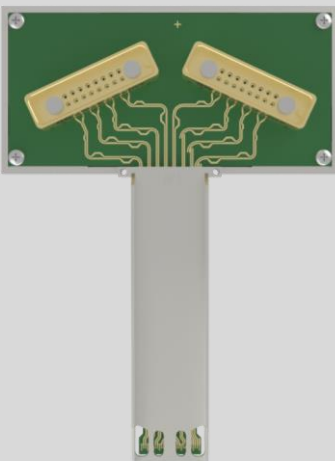


# Host Compliance Boards

## OSFP800 Technical Product Sheet

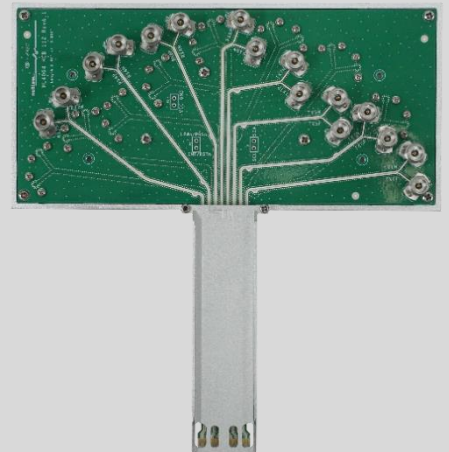
### Industry Leading OSFP800 HCB Offerings



ML4064-HCB-112-MXPM70



ML4064-CHCB-112



ML4064-HCB-112

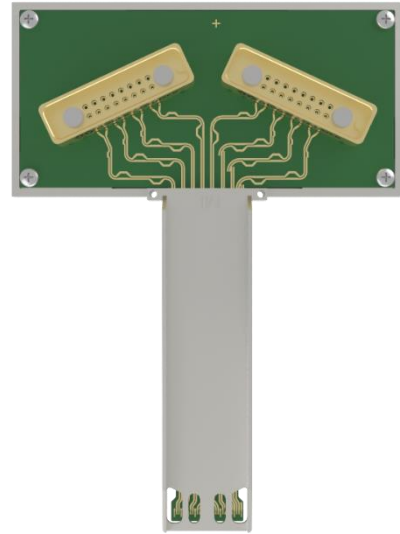
### Applications

- Validate OSFP800 host port signal integrity
- OSFP800 host port output test
- Host stressed input testing
- Module stressed input test calibration
- Compliance testing

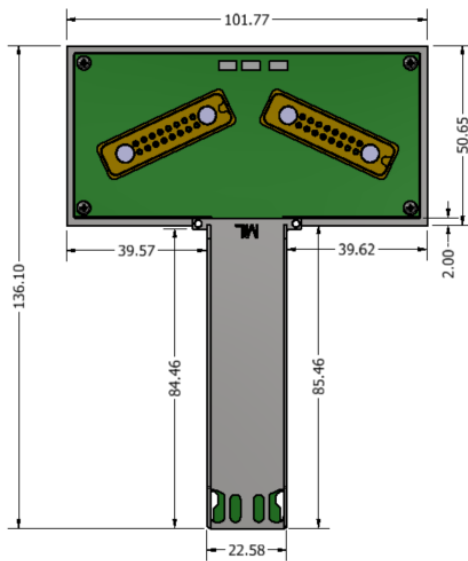
## MXPM70 HCB

### ML4064-HCB-112-MXPM70:

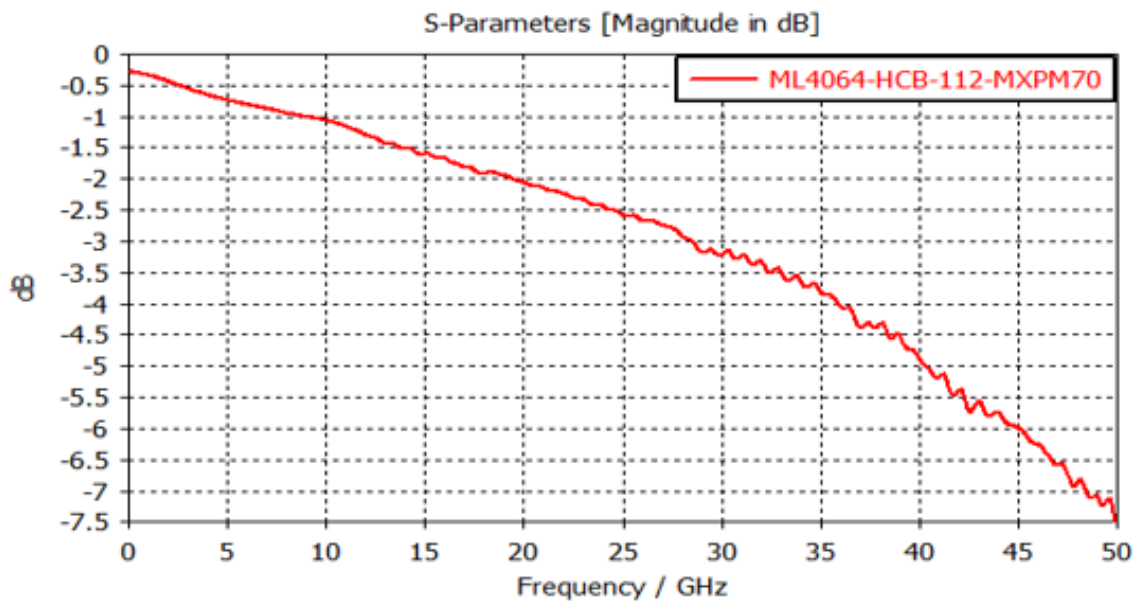
- OSFP800 MSA Form Factor
- Compliant with IEEE802.3ck and CEI-56G-VSR-NRZ
- Built with high performance PCB Material
- High performance signal integrity traces
- Same low Insertion Loss for all channels
- Supports 8x112G TX and RX lanes
- High speed signals accessible through 2x8 Huber+Suhner MXPM70 connector rows



### Mechanical Details



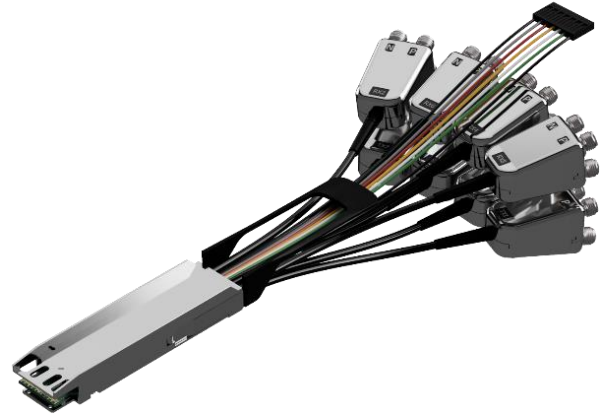
### SI Details: Insertion Loss



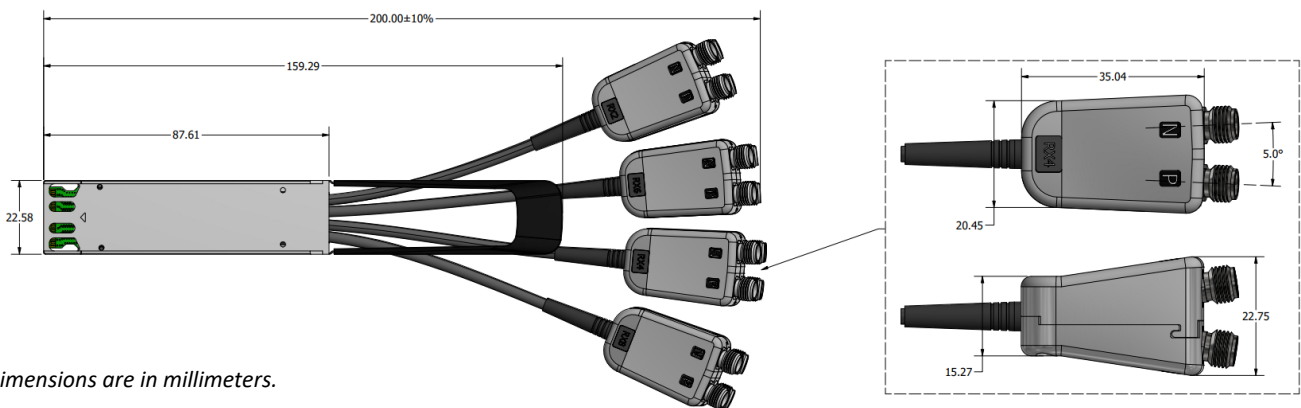
## Cabled HCB

### ML4064-CHCB-112:

- OSFP800 MSA Form Factor
- Compliant with IEEE802.3ck and CEI-56G-VSR-NRZ
- Built with high performance PCB Material
- High performance signal integrity traces
- Same low Insertion Loss for all channels
- Supports 8x112G TX and RX lanes
- High speed signals accessible through 2.4mm or 1.85 mm connectors
- Suitable for compact use cases

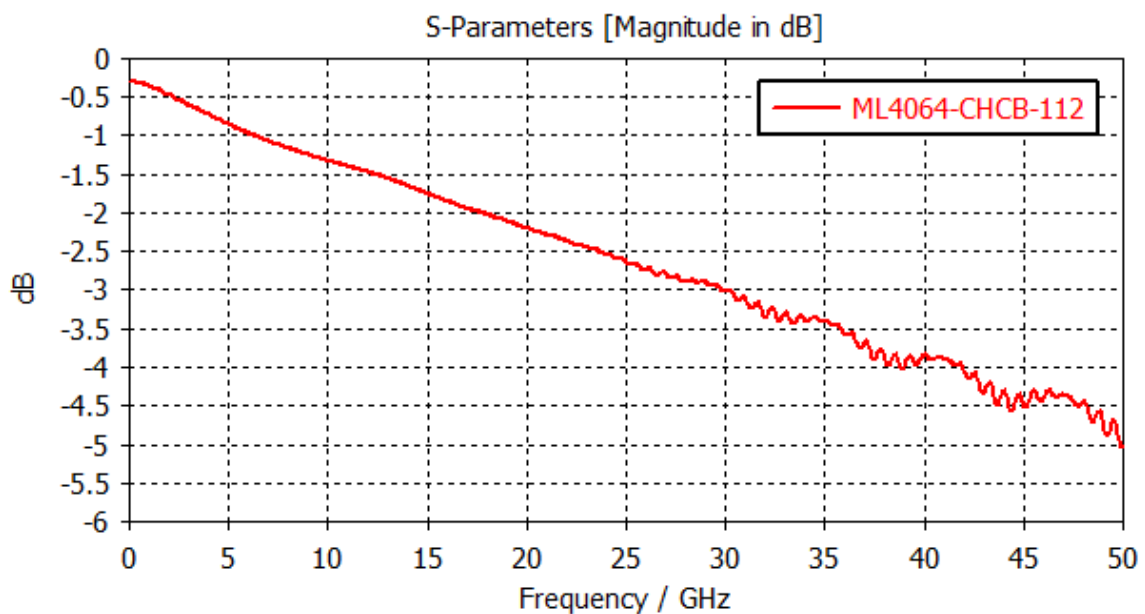


### Mechanical details



Dimensions are in millimeters.

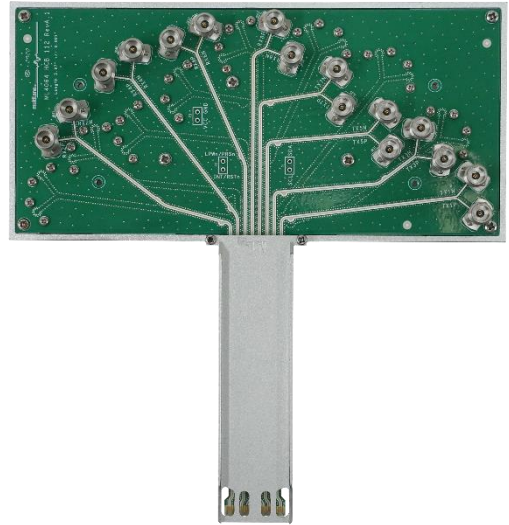
### SI details: Insertion Loss



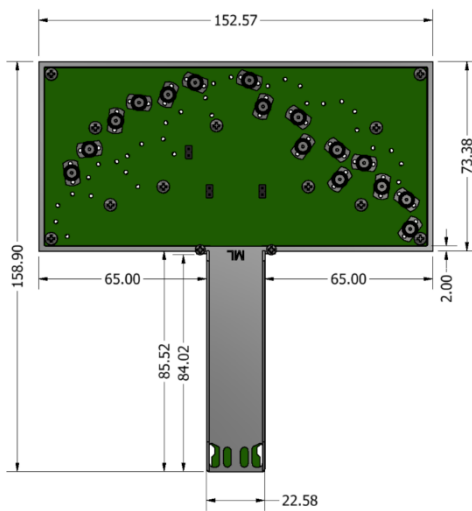
## Precision Connectors HCB

### ML4064-HCB-112:

- OSFP800 MSA Form Factor
- Compliant with IEEE802.3ck and CEI-56G-VSR-NRZ
- Built with high performance PCB Material
- High performance signal integrity traces
- Same low Insertion Loss for all channels
- Supports 8x112G TX and RX lanes
- High speed signals accessible through 2.4-mm or 1.85-mm connectors

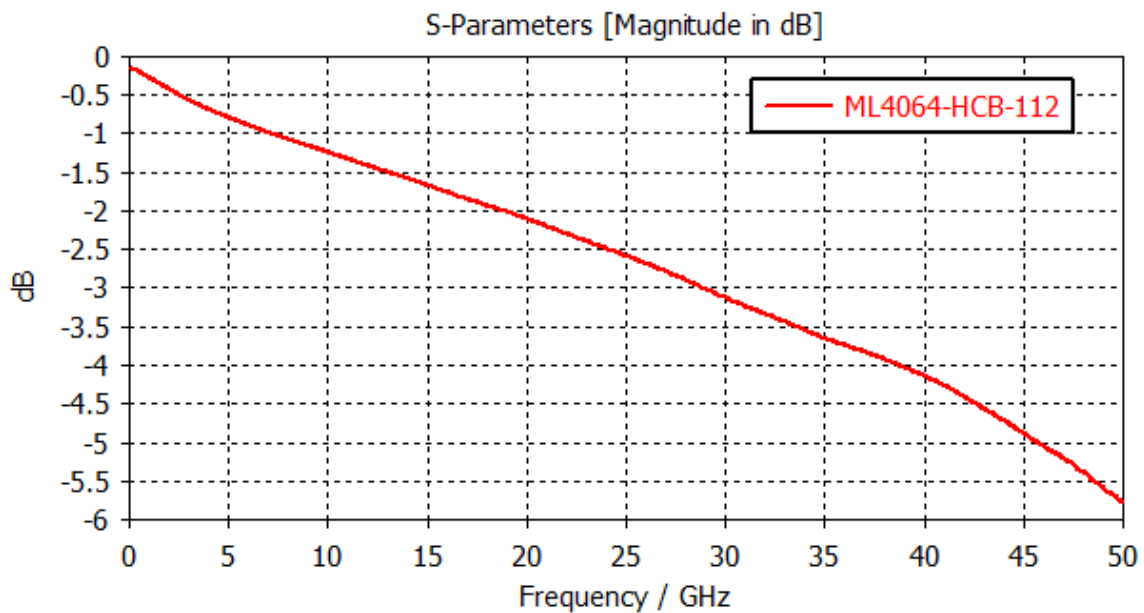


### Mechanical Details:



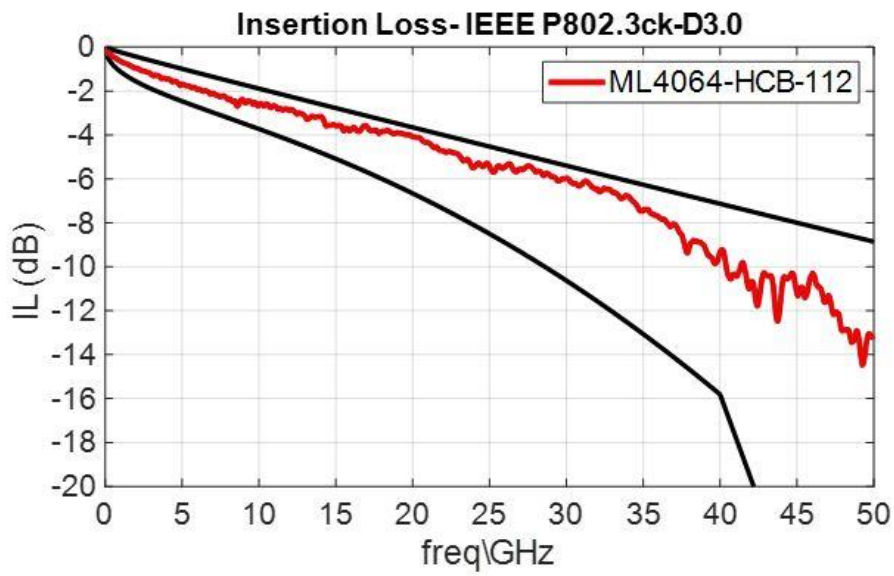
Dimensions are in millimeters.

### SI details: Insertion Loss



Measured SI Data

ML4064-HCB-112:



*Note: All measured data is for mated test fixtures (Host compliance board mated with module compliance board)*

## Ordering Options

OSFP800 HCB Ordering Options	Notes
ML4064-HCB-112-MXPM70	OSFP800 HCB, 2 Huber+Suhner MXPM70 connectors Cable: 2x8 Huber Suhner MXPM70 Cable Assembly.
ML4064-CHCB-112-18/24	OSFP800 CHCB, 2.4- or 1.85-mm connectors
ML4064-HCB-112-18/24	OSFP800 HCB, 2.4- or 1.85-mm connectors

Recommended Accessories	Notes
MXPM70-6-M	Option MXPM70 Cable, 2x8 Huber Suhner MXPM70 Cable Assembly, 6 inch length, 1.85mm Male connector
MXPM70-3-F	Option MXPM70 Cable, 2x8 Huber Suhner MXPM70 Cable Assembly, 3 inch length, 1.85mm Female connector